



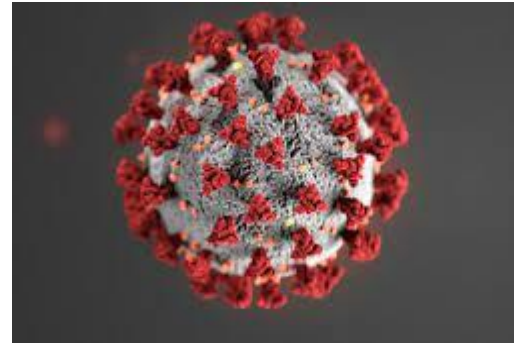
# Methods of combating COVID

Jinwoo Jeong



# Introduction

- COVID is a respiratory virus that originated in Wuhan, China
- Has high transmissibility and fast spread
- Can spread from a person's nose or mouth in liquid particles
- Killed over 6 million people worldwide



# Zero-COVID

- The maximum control and suppression policy
- Goal is to get back to zero cases using lockdowns, contact tracing and more
- Initial stage and a containment stage
- Australia, China, Hong Kong, South Korea and more
- Variants and vaccines caused many countries to stop pursuing this strategy
- Only China and North Korea still pursue this policy



# Living with COVID

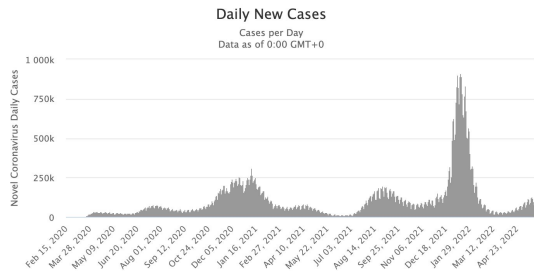
- Opposite of Zero-COVID
- Designates COVID as an endemic and prioritizes returning to normal(not necessarily eradication)
- Considers COVID manageable with vaccines
- No uses of lockdowns or severe restrictions such as restrictions on gatherings



# Research Methodology

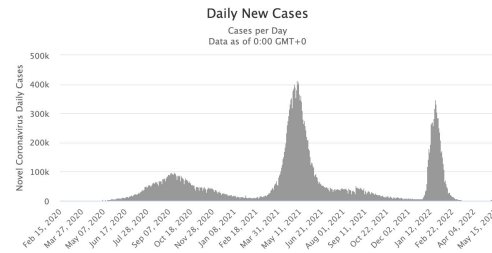
- I used graphs from worldometer.com to compare daily case trends between countries that show different patterns
- Also calculated relative frequencies of COVID cases per country to get a more accurate data set

Daily New Cases in the United States



Vs.

Daily New Cases in India



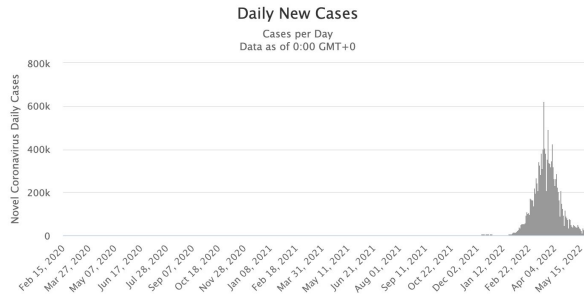
# Shortened Data Analysis

- The two countries that still pursue Zero-COVID are not in the best situation
- North Korea reported 1.72 million cases last week which is about 7% of the whole population
- Strict Chinese lockdowns have contained the COVID but also brought strong oppositions from people
- Economy generally did not function well under the policy
- Many European countries and brokerages are considering divesting from China

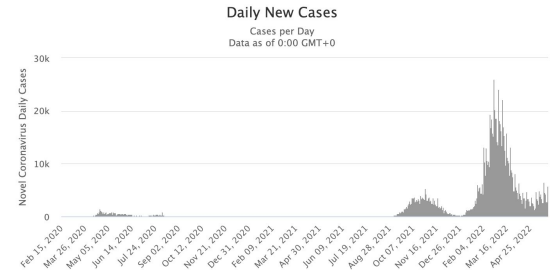
# Cont'd(Living with COVID)

- Better than Zero COVID
- However, the spread of COVID cases depended on the timing and strengths of policies each countries implemented

Daily New Cases in South Korea



Daily New Cases in Singapore



# Conclusion

- Inconclusive other than the fact that Zero-COVID isn't working well
- Need to wait until things go back to normal in order to form a definite conclusion

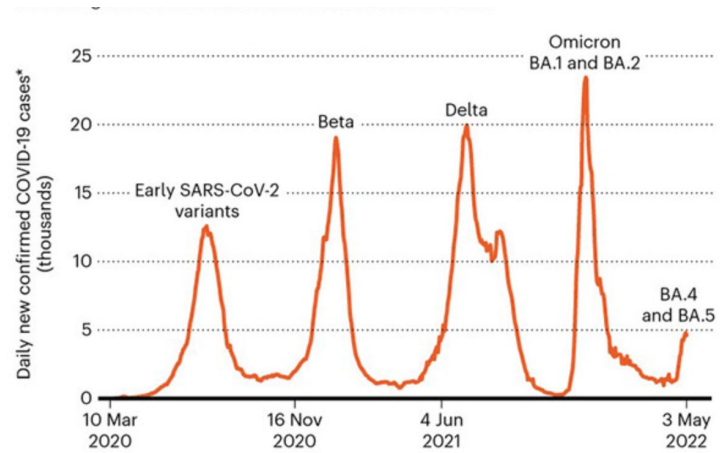
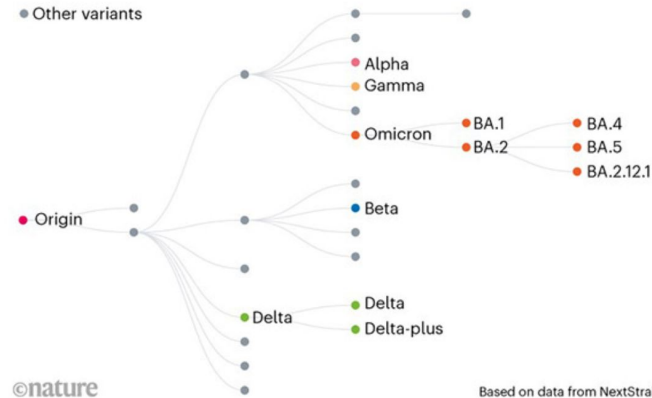




# TMI

## PATHOGEN PROGRESSION

This diagram shows how the coronavirus SARS-CoV-2 has evolved to spawn several related variants. The latest are BA.4 and BA.5 along the Omicron lineage, which has dominated infections this year.



Thank you very much!